

# COMPANY PROFILE

Complete Acoustic, Emission and Energy Solutions



# Mission & Vision

## Our Mission

“To provide turnkey Acoustic, Emission & Energy Solutions for the Power Generation, Industrial & Mining markets.

To uphold our unswerving commitment to ethical values, our attention to detail, our enthusiasm, that in turn, will ensure the best possible service to our clients is achieved. As these factors are maintained Parratech will continue to gain market share and experience financial prosperity”.

## Our Vision

“Our vision is to provide a level of service clients desire and competitors aspire to”

Our Passion

Our Expertise

Our Experience

Our People

Our Reputation

Your Solution.

## Overview

Parratech Environmental Control is a leading specialist in Acoustic, Emission & Energy Solutions for the Power Generation, Industrial & Mining markets.

We design, engineer, manufacture, project manage and install the highest quality products & solutions for our clients throughout Australia and worldwide.

Parratech's 'solution based' attitude colours our approach to every project. Unparalleled dedication, experience, innovation and expertise within our teams, ultimately ensures we deliver the highest quality project on time, on quality and on budget.

**At Parratech we share a passion for excellence at every level.**



# Delivery

Solutions come in many ways

## With you every step...

*‘There is much more to being an Acoustic and Mechanical Solutions provider than insulation laying pipes and welding flanges’*

At Parratech we approach every project with a fresh outlook. We carry the lessons learnt from previous experiences and model our Project Plan specifically to the requirements and schedule of our clients.

We understand that that site conditions, personnel, products, requirements, regulation, and compliance consistently

change and thus we model a ‘best suited’ Project Plan to ensure we achieve the ultimate project outcome – virtuous quality, on time and on budget, this outcome will only be made a reality as our team continues to invest unparalleled dedication, experience, innovation and expertise to your project.

### **We Listen, We Understand, We Do**

Design is often at the core of a sustainable and commercially viable solution. We will continue to invest in this

area of our business and offer our clients the most relevant solution. From project conception to final commissioning and handover, Parratech are committed to being your engineered solutions partner of choice. Parratech has developed trusted relationships with some of the world’s largest energy providers and data centre managers.

Parrtech has developed trusted relationships with some of Asia Pacifics largest energy providers and data centre managers. Unparalleled dedication,

experience, innovation and expertise within our teams, ultimately ensures we deliver the highest quality project on time, on quality and on budget.



# Green



Protecting the environment is one of our core values and is central to the way we approach business. Our commitment to the environment is evident at all our projects and we adhere to strict environmental policies ensuring

compliance with local environmental laws and regulations. Our environmental performance is a key component of our sustainability strategy of continuous improvement.

We are environmental an environemntal management system whereby we constantly challenge ourselves to innovate new ways to prevent pollution, reduce waste and conserve resources through efficient use of energy and

materials. We believe environmental awareness can be turned into a tangible business benefit.

Greener business makes good financial sense...

# Safety



As the regulatory environment evolves we are working to take a leadership approach in safety to go beyond compliance. The safety of our people and the communities in which we work is the foundation for the implementation of our safety motto: **Safe Today Here Tomorrow**

Our team understands that every action has a risk and that every risk has to be controlled, so that we ensure our actions are in accordance with our commitment.

**TargetZERO - Safe Today Here Tomorrow, Parratech is fully committed to:**

- An injury free workplace where everybody goes home safe
- Continually striving to improve accountability and performance
- Instilling a cultural mindset in the company where safety is everyone responsibility

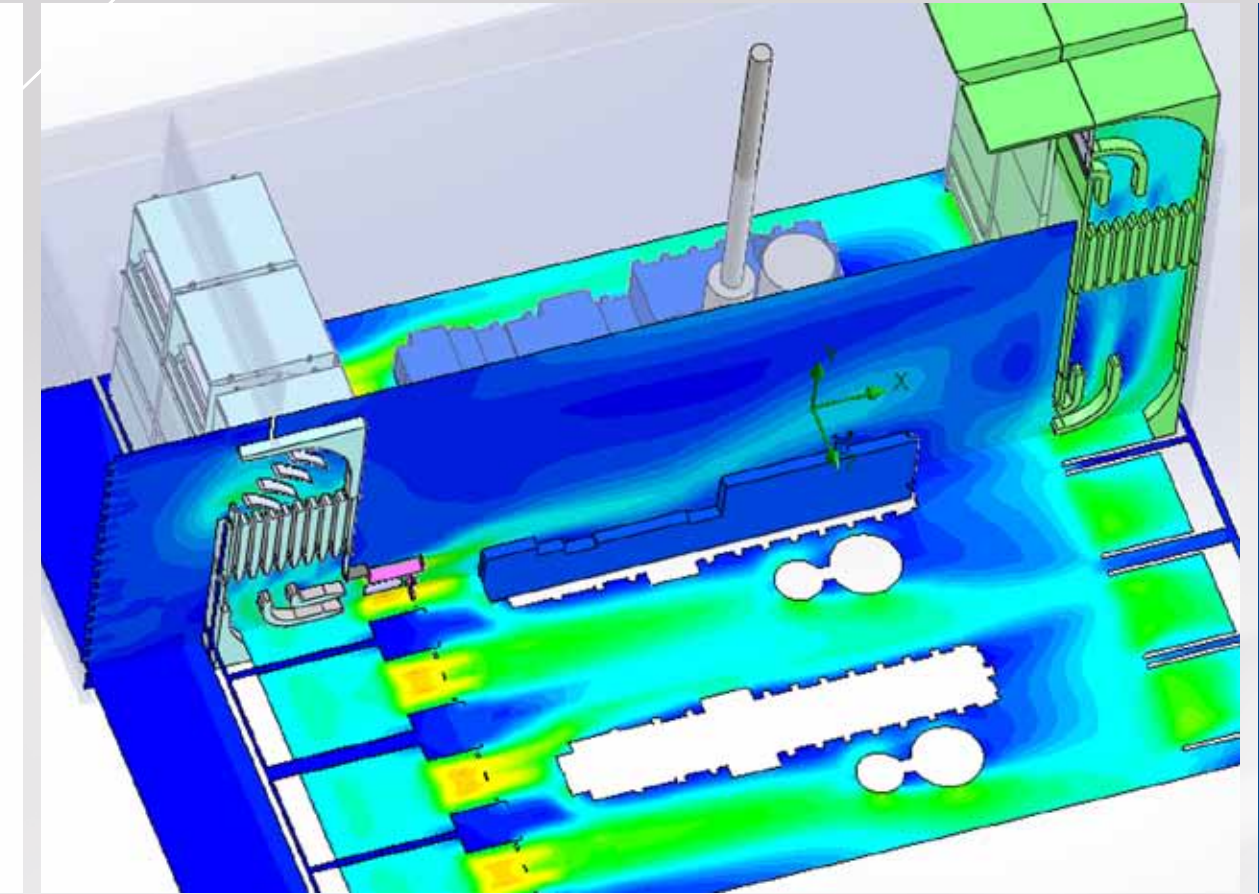
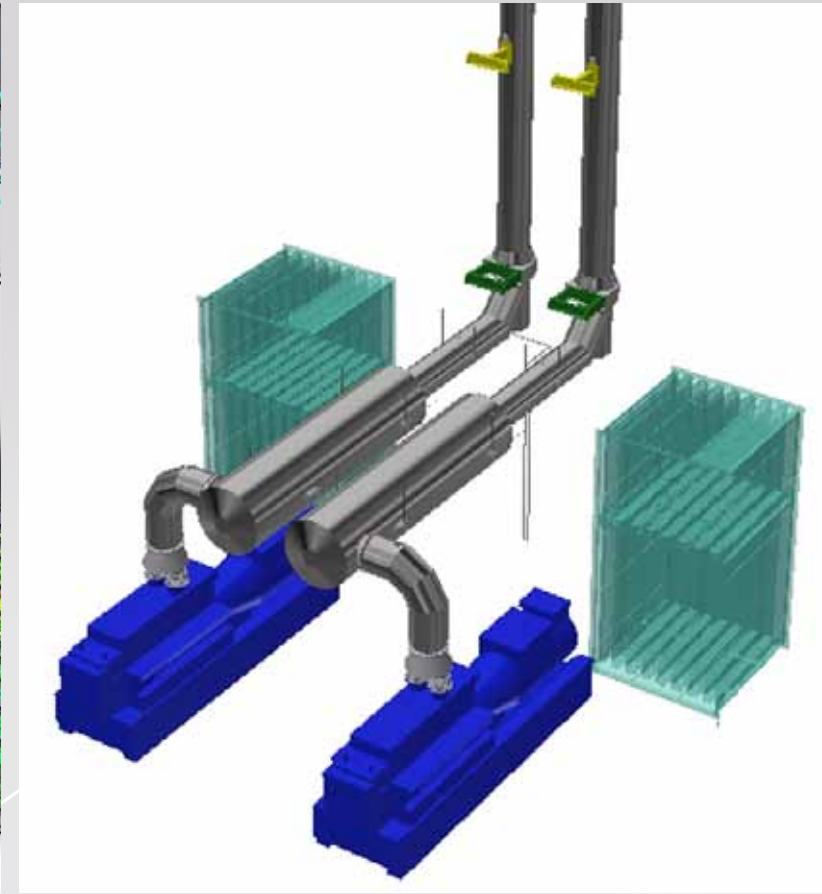
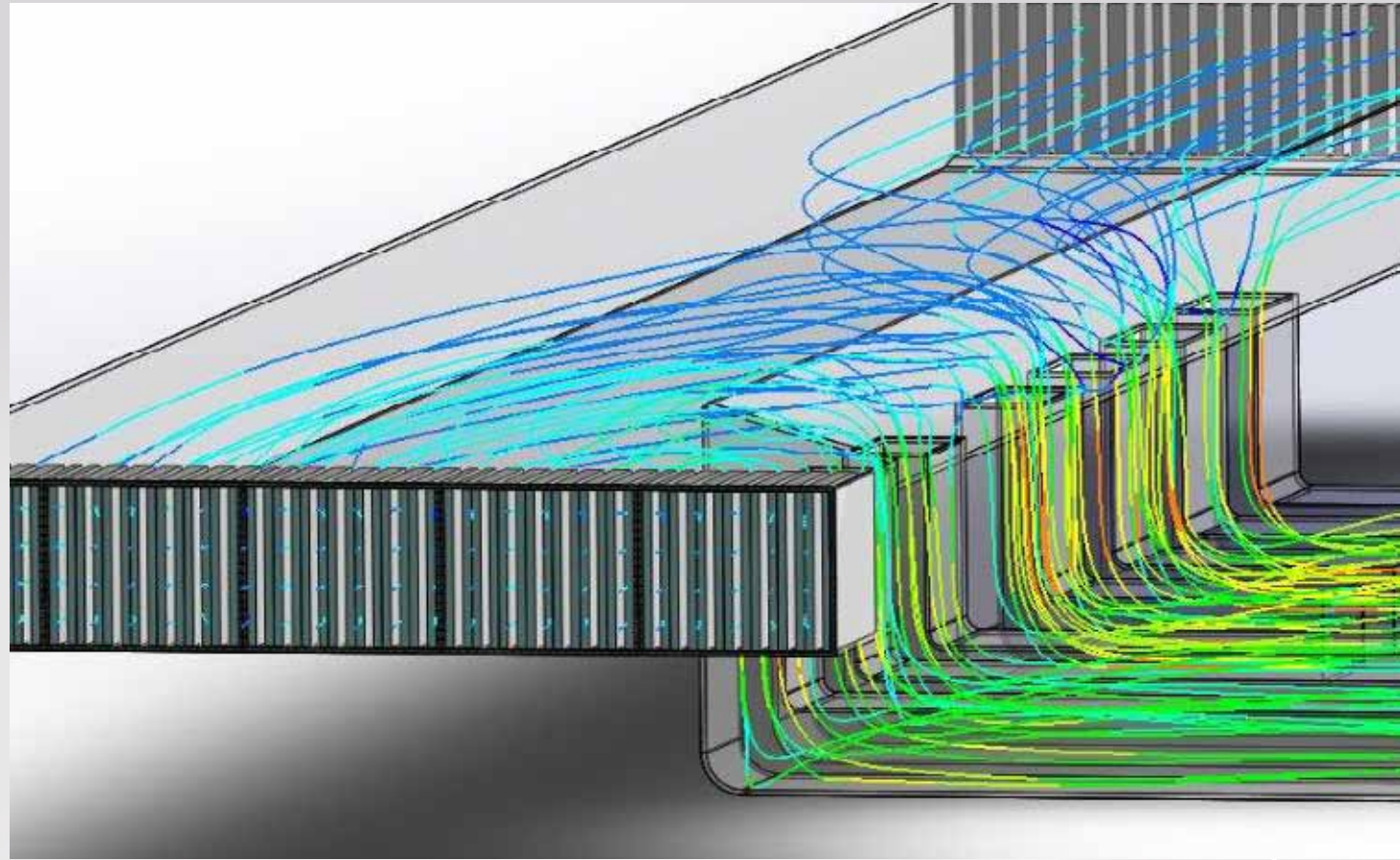


*Safe Today Here Tomorrow*



# Design & Engineering

Parratech's complete and thorough engineering design analysis ensures you can have peace of mind & assurance that you are dealing with the experts.





# Manufacture

Utilising the latest technologically advanced equipment & processes, Parratech's Manufacturing Division share the passion and enthusiasm of delivering projects to the highest of quality and conformance.





# Installation

At Parratech we approach each project with a fresh outlook. We carry the lessons learnt from previous experiences and model our installation Project Plan specific to the requirements of our client.

We understand that conditions, personnel, products, requirements, regulation and compliance constantly change and thus we model a “best suited” Project Plan to ensure we achieve Our Philosophy.





# Our Philosophy

Our trademarked philosophy for delivering projects On Time, On Quality and On Budget® is made a reality through our unparalleled dedication, experience, innovation and expertise within our teams.





# Recent Projects



Power Plant, Fiji



Dubai International Airport



Royal Darwin Hospital



Equinix Data Centre, Sydney



Darling Quarter, Sydney



PNG Ports 1



Power Plant, Tahiti



BNZ, Auckland



NRAH, Adelaide



Gore Hill Data Centre, Sydney



Citigen, London



ANZ Bank, Singapore



Gorgon, Barrow Island



Metronode Data Centre, VIC



Qantas Trigen Plant, Sydney



Power Plant, Shanghai



# Recent Projects



Westpac, Sydney



385 Bourke, Melbourne



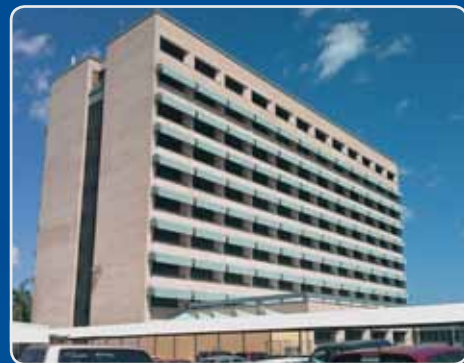
Fujitsu, Sydney



Beltana Power Station



8 Chiefly, Sydney



Royal Darwin Hospital



Defence Facility, Canberra



Intelligence Facility Canberra



100 Market Street, Centrepont Tower, Sydney



# Products

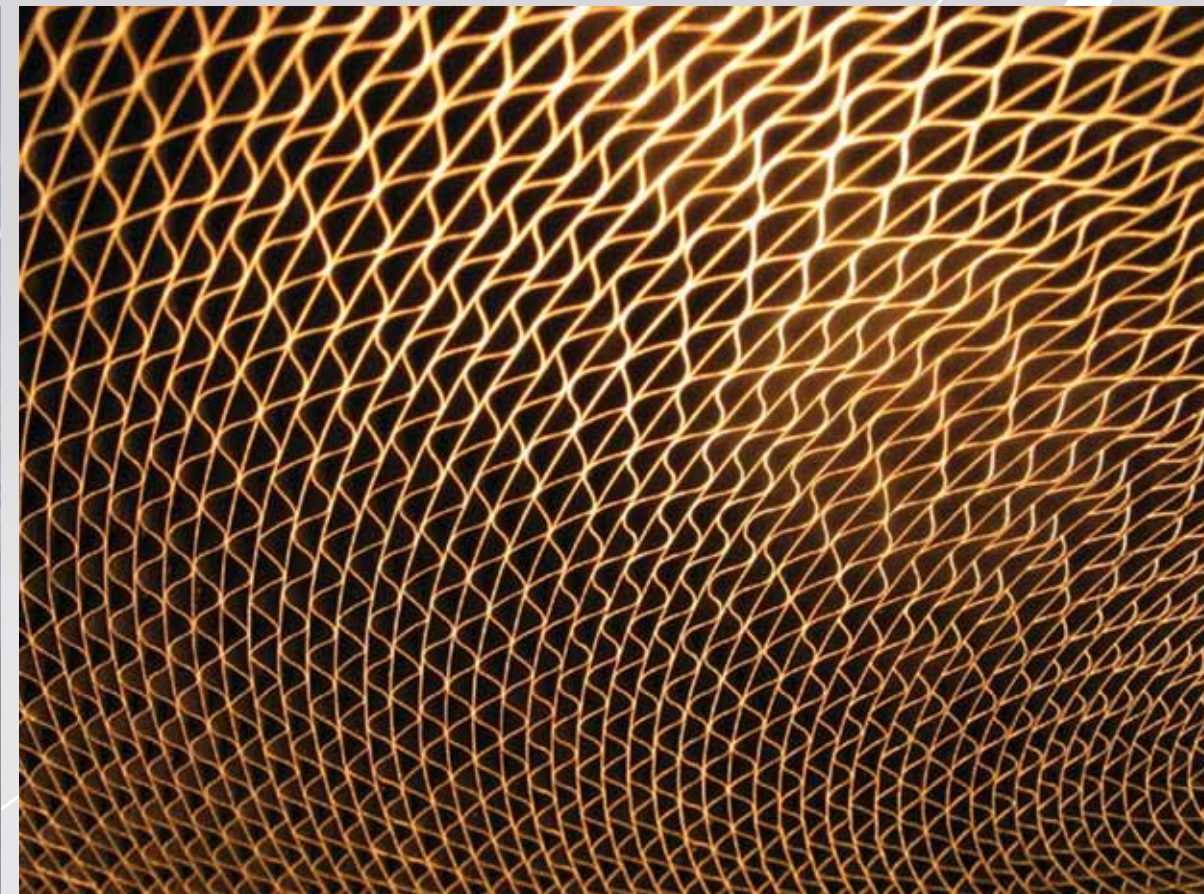
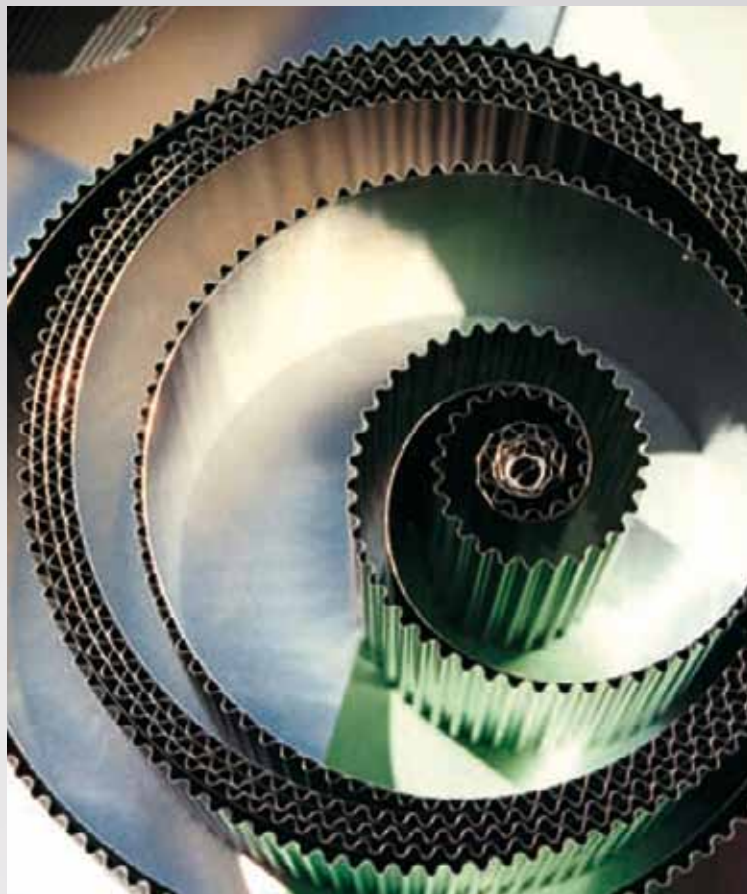
## Emission Control

Parratech designs, engineers and manufactures a complete range of purifiers to reduce harmful emissions, including PM, CO, HC, R-CHO, VOC, NMHC from diesel and gas-fired engines along with other industrial operations. These include Diesel Oxidation Catalysts, Diesel Soot Filters, Particulate Oxidation Catalysts & Oxidation Catalysts.

Our global supply networks ensure we bring the best technology to our clients.

We work with environmental regulators, consultants and advisors to ensure we offer the most suitable, specialised products in accordance to OH&S policy, regulation and individual specification

Our Consultants are renown for providing customised solutions for projects where emission control is required.





# Exhaust Silencers

Parratech Exhaust Gas Silencers are designed, engineered and manufactured to meet the stringent requirements of today's increasingly sound sensitive environment.

Parratech's precise attention to detail, including engine type, design constraints, attenuation requirements, physical layouts along with allowable system back pressure, gas velocities, insertion losses, result in proven a engineering methodology.

With hundreds of Parratech Silencers operating worldwide in Prime Power applications, our consistently proven, tailored solutions allow our clients superior confidence and peace of mind in any project.





# Exhaust Flues

We offer Exhaust Flue Systems suitable a range of applications from commercials buildings to remote mine sites.

Parratech's precise attention to detail, including exhaust gas flow, exhaust gas temperature, wind regions and loadings, thermal expansion, structural analysis and complete system back pressure calculations ensures we provide a package that is tailored specific to our Clients project.

Our pragmatic designing and planning means we focus on the most economical and time-efficient Exhaust Flue System, reducing on-site installation time and hassle for our Clients.





# CHP

Parratech is your partner for Waste Heat Recovery Units (WHRU) & Steam Generators in combined heat and power plants.

Working with global manufacturer and supplier of heat recovery equipment, Aprovis Energy Systems GmbH, Parratech's range of products are specifically designed, engineered, manufactured and tested in accordance to relevant local Standards.

With Aprovis' proven experience in thousands of successful projects worldwide; Parratech bring global expertise to the local market.



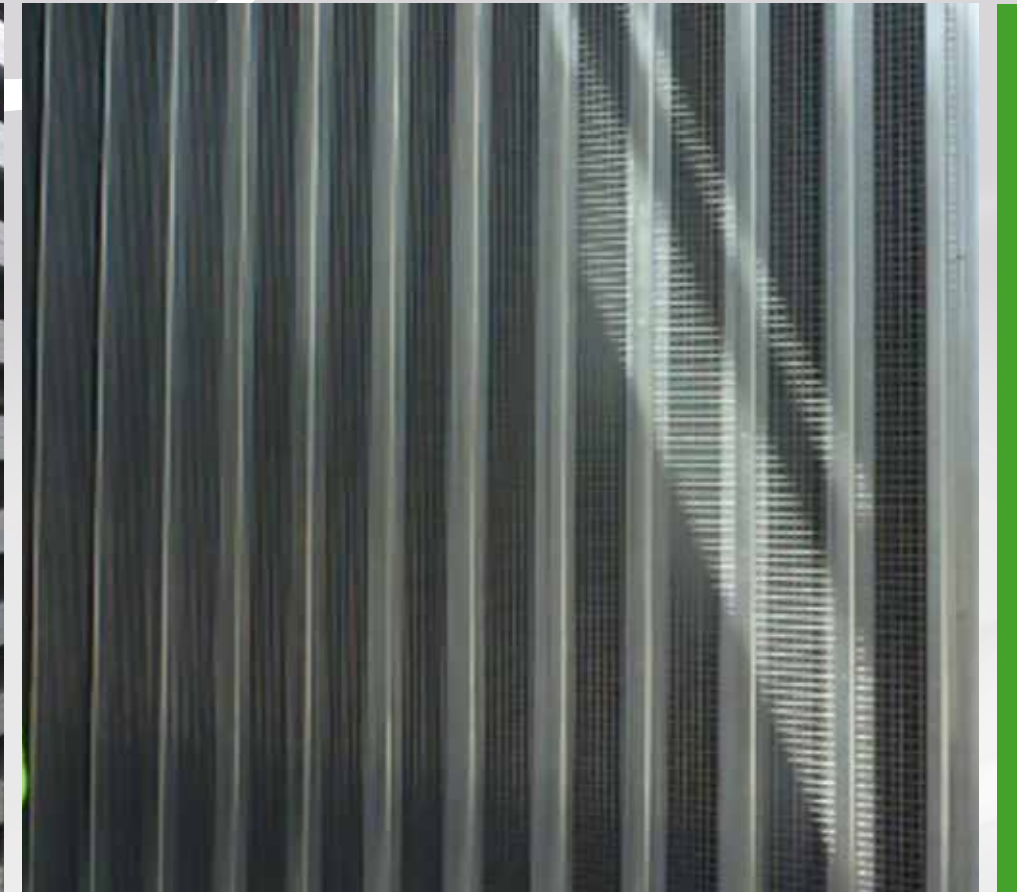


# Attenuators & Fans

Parratech Attenuators and Ventilation Fans are designed, engineered and manufactured to meet the stringent requirements of modern industrial and commercial projects.

Our Design & Engineering Team's particular attention to details including; airflow requirements, pressure drop levels, room layouts, insertion losses and velocities, result in proven engineering methodology.

Providing flexible, pragmatic solutions enables Parratech Attenuators and Ventilation Fans to be custom designed, engineered and manufactured to almost any size or configuration which in turn gives our clients superior control of their operation and peace of mind in any project.





# Acoustic Enclosures

We offer a complete range of Acoustic Enclosures for high level noise reduction for both internal and external applications.

Our Acoustic Enclosures are custom designed and engineered, specific to our Clients' specifications and requirements. Our flexibility and project specific focus allows a range of options to be incorporated into the Acoustic Enclosure.

Parratech's Acoustic Enclosures are used for the noise reduction for power generation equipment, manufacturing equipment, air conditioning plant, compressors, pumps and other mechanical noise.





# Diesel Fuel Systems

In a 24 x 7 world uptime is everything. Whether it's lost time, lost data or lost revenue, fuel systems form an integral part to ensuring the reliability of emergency power generation.

At Parratech, through our innovation and expertise in design and project management, we provide market leading, turnkey Diesel Fuel Systems for mission critical facilities in demanding environments.

From bulk storage tanks to underground fuel lines, pumps stations or leak detection, our Design Engineers and Project Engineers ensure that our Diesel Fuel Systems are fully compliant with relevant standards and regulations, giving our Clients certainty and peace of mind in every project.

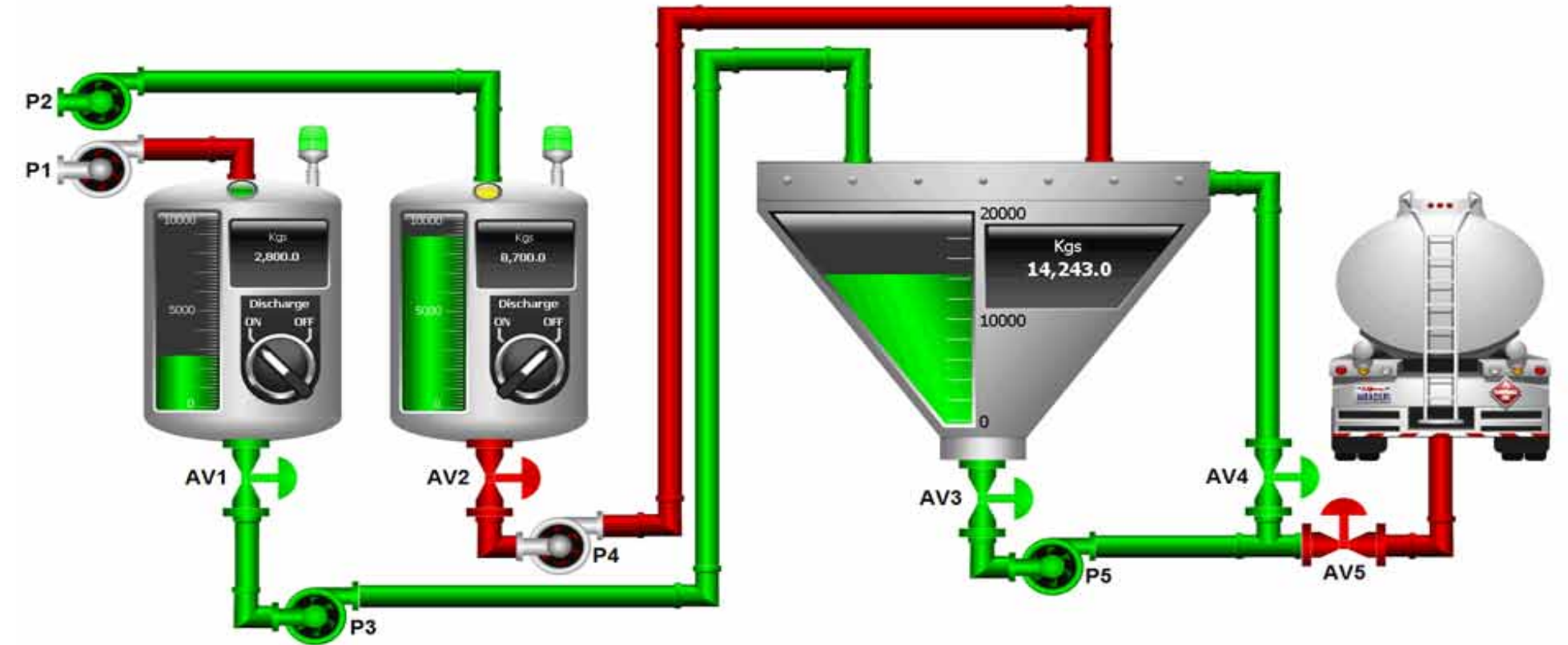




# Industrial Automation

Parratech provide industrial automation and control services to the Industrial & Power Generation sectors. Utilizing the latest PLC and interface technology, Parratech design, build, install a quality, highly reliable solutions for fuel and liquid transfer systems.

Our design team tailor specific solutions to our clients project design criteria and specifications from concept through to commissioning that make people and facilities more secure, efficient and effective.





# Coolant Systems

At Parratech we provide turnkey Coolant Systems from a design stage through to commissioning. We ensure that each component on the critical supply of coolant to the Genset is fully compliant with the engine requirements and necessary regulatory codes.

Our Engineers have extensive experience in offering specialist Coolant Systems to suit specific environments and applications.





# Mechanical

Parratech offer turnkey design, engineering, manufacturing, project management and installation for a complete range of Mechanical Solutions for the Industrial & Mining markets.

With modern developments, regulation and policy changes, our global supply network ensure we bring the best technology, expertise and conformance to our client's projects.

From high grade Stainless Steel pipework and connections to specialised pumps, valves and controls, Parratech's Engineers and Installation Teams have the dedication, project experience, design innovation and technical expertise to execute fast tracked, complex and demanding project installations.





# Acoustic

Specifically designed for the modern industrial environment, Parratech's range of Acoustic Systems offer optimum sound absorption whilst coupling an innovative & contemporary installation system.

Parratech's Acoustic Panels are designed and tested to withstand hot, humid and damp conditions ultimately providing long-term stability and performance.

With proven results in a range of applications, Parratech offer solution based Acoustic Panel Systems; dependent on project type, budget, specifications, delivery timelines and environmental obligations.







**Head Office (Sydney)** 3 Killo Crescent, Glendenning, NSW 2761 Australia

Tel: +61 2 9890 4425 | Email: [info@parratech.com.au](mailto:info@parratech.com.au) | Web: [www.parratech.com.au](http://www.parratech.com.au)